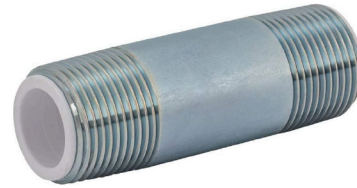


Dielectric Nipples-Thread x Thread

- 300 PSI
- Rated Up to 230° F
- ASTM A53, ANSI B1.20.1 & ASTM F492-95
- Galvanized Steel
- Pex Liner
- Metal to Metal Design



Part No.	Size	Inner Pack	Master Pack
116-050-30	1/2" X 3"	25	300
116-075-25	3/4" X 2-1/2"	25	300
116-075-30	3/4" X 3"	25	200
116-075-40	3/4" X 4"	25	200
116-100-25	1" X 2-1/2"	25	100
116-100-30	1" X 3"	25	100
116-100-40	1" X 4"	25	100
116-125-40	1-1/4" X 4"	25	100
116-150-40	1-1/2" X 4"	25	50
116-200-40	2" X 4"	1	40
116-250-60	2-1/2" X 6"	1	20
116-300-60	3" X 6"	1	10
116-400-60	4" X 6"	1	8

Dielectric Nipples-Grooved x Grooved



Part No.	Size	Inner Pack	Master Pack
117-050-40	2" X 4"	1	1
117-250-60	2-1/2" X 6"	1	1
117-300-60	3" X 6"	1	10
117-400-60	4" X 6"	1	1

DIELECTRIC FITTING

Dielectric Nipples-Threaded x Grooved



NSF61.9

Part No.	Size	Inner Pack	Master Pack
118-125-40	1-1/4" X 4"	25	100
118-150-40	1-1/2" X 4"	25	50
118-200-40	2" X 4"	1	40
118-250-60	2-1/2" X 6"	1	20
118-300-60	3" X 6"	1	10
118-400-60	4" X 6"	1	8

DIELECTRIC FITTING